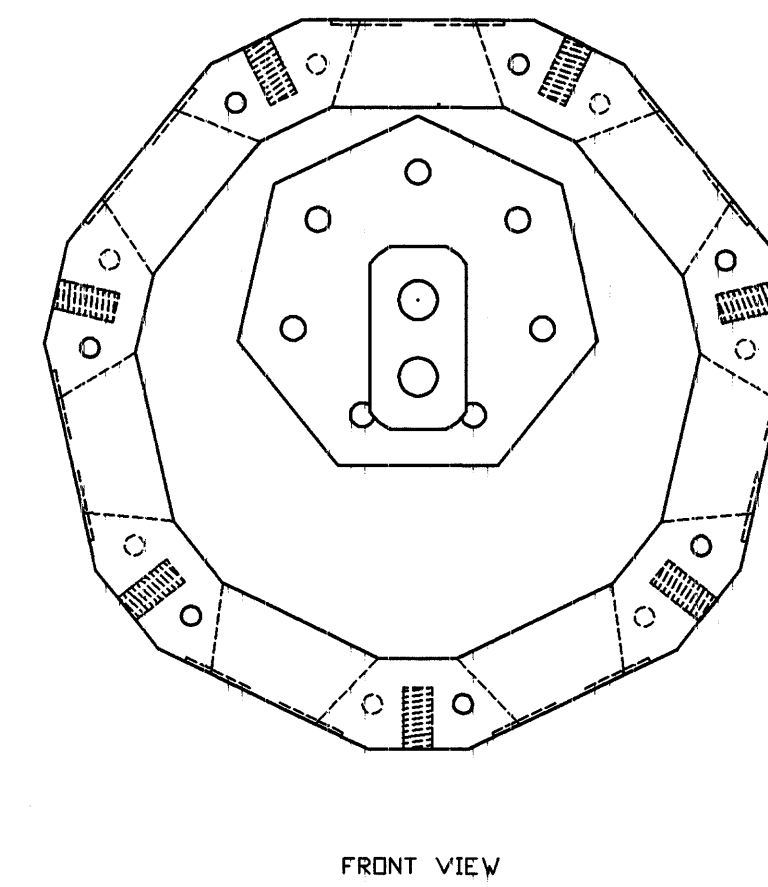
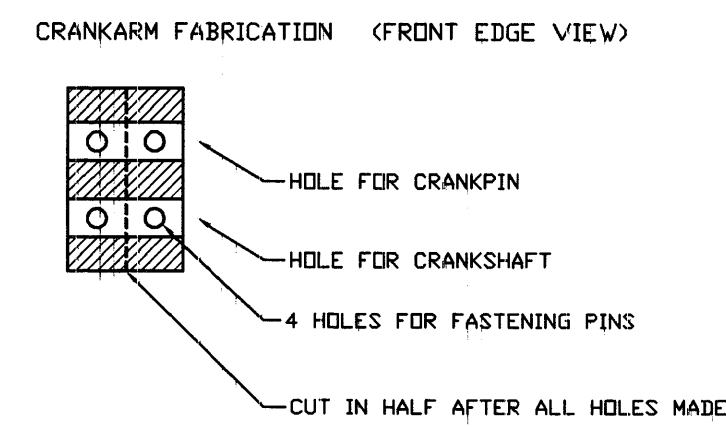
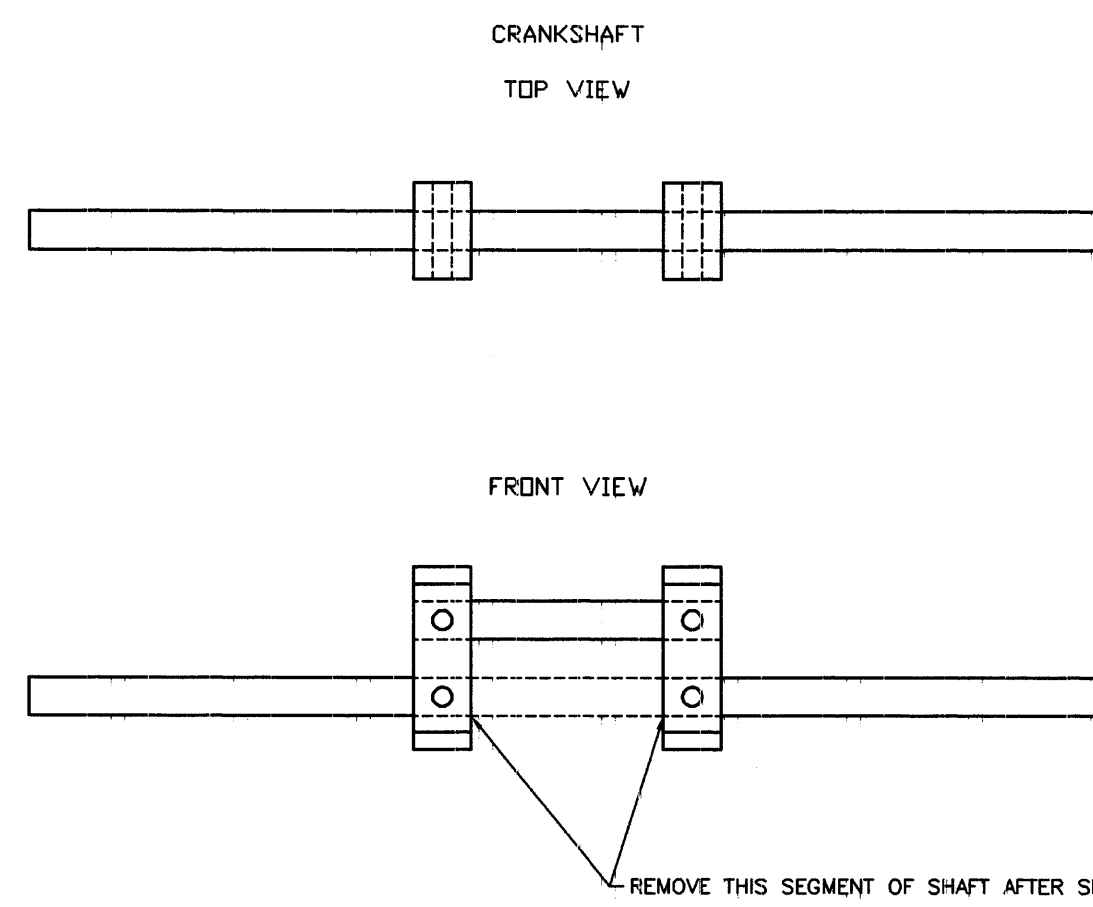


MOUNTING RING SHOWING CRANKSHAFT AND CRANK DISK IN PLACE



NOTES  
 D-RING SIZES:  
 VALVE COVERS: #114  
 CYLINDER HEADS: #228  
 PISTON RINGS: #326  
 ROD ENDS:  
 CRANK DISK:  
 FAFNIR REP5F5  
 PISTONS:  
 REPSF15  
 NOT PICTURED:  
 CRANKSHAFT BEARINGS  
 CRANK DISK BEARING  
 MOUNTING  
 CHECK VALVE BALL DIAMETER  
 TOLERANCES  
 BALANCED FLYWHEEL  
 INTAKE FILTERS, OUTFLOW PLUMBING FITTINGS/PORT SPECS  
 ONE ROD-END SHOULD BE FIXED TO CRANK DISK

MATERIALS:  
 CYLINDERS: FILAMENT-WOUND TEFLON-IMPREGNATED EPDXY (BLACK AMALGON BA200)  
 DYNAMIC D-RINGS: VITON  
 STATIC D-RINGS: BUNA-N  
 MOUNTING RING: ALUMINUM  
 TIE ROD FLANGES, CONNECTING RODS, CRANKSHAFT, CRANK DISK, SHAFT MOUNTING PLATES: STEEL  
 VALVE COVERS, CYLINDER HEADS, PISTONS, CHECK VALVE BALLS: STAINLESS STEEL  
 TIE RODS, BOLTS: GRADE 8 BOLTS